



KOALA
Medical Pty Ltd

EST. 1993

Autoclavable Connectors and Extention Tubes



GM-74043

- Straight adapter 22mm M/15mm F to 22mm M/15mm F
- Made of high grade plastics formulated to withstand the rigors of cleaning, processing and autoclaving without affecting performance.



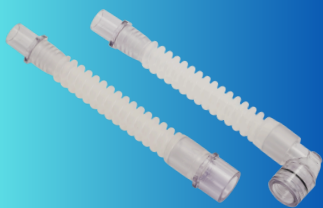
DHD60-1400

- Adult swivel wye 22mm M/15mm F to 22mm M
- Made of high grade plastics formulated to withstand the rigors of cleaning, processing and autoclaving without affecting performance.



DHD60-0139

- Tube inhaler for application of MDI canisters on intubated patients
- With suction port
- Swivel connection
- Easy to use
- Autoclavable



DHD60-1502 (Elbow)

DHD60-1503 (Straight)

- Silicone extension tube with 15mm inlet
- Low dead space
- Autoclavable

All sold in
packs of
5ea



02 9979 9374



sales@koalamedical.com.au



koalamedical.com.au

